



Equipment Rentals &

Sales

Rental Price  
Directory

**Store:** (570) 366-1071

**Fax:** (570) 366-1081

**Email:** [Info@arkrentals.com](mailto:Info@arkrentals.com)

1180 Centre Turnpike Orwigsburg, PA 17961

**[www.ArkRentals.com](http://www.ArkRentals.com)**

## General Information

### Rental Terms :

**4 Hour Rental :** Equipment rented is for a total of 4 hours starting from pickup time through return time. Overage time will be prorated.

**Full Day Rental :** Equipment can be rented for a 24-hour period. Hour-metered machines are limited to 8 hours. Overage time will be prorated.

**Overnight Rental :** Equipment rented after 4 PM and returned before 8 AM the following day qualifies for a 4-hour rate. Equipment with an hour meter is restricted to a 4-hour limit. Overage time will be prorated.

**Weekend Rental :** When you rent equipment on Friday after 3 PM or on Saturday morning before 10 AM, and return it before 8 AM on Monday, you will be charged a 2-day rental fee. If you rent on Saturday between 10 AM and 3 PM and return it before 8 AM on Monday, you will be charged a day-and-a-half rental fee. If you rent on Saturday between 3 PM and 4 PM and return it before 8 AM on Monday, you will be charged a 1-day rental fee. Additionally, hourly machines have a daily limit of 8 hours.

**Week Rental :** Equipment rented for 7-day periods will be charged at a weekly rate. Equipment with hour meters should not exceed 40 hours per week rental. Overage time will be prorated.

**Monthly Rental :** Equipment can be rented for either 28 days or 160 hours on hour-metered machines. Overage time will be prorated.

### Payment :

Payment is required at pickup or delivery. Billing accounts available with credit approval.

### Delivery :

Delivery services are available to most locations. To obtain accurate delivery rates, contact us.

### Damage Waiver :

All equipment rentals are subject to an additional 12% damage waiver fee. Please note that this damage waiver is not insurance and it does not cover any damage to the tires or tracks, glass, negligence, abuse, or any misuse of the rented equipment. If you decide not to purchase the damage waiver, you will be responsible for all damage incurred during the rental period. It's important to note that the damage waiver doesn't include coverage for one tire in case of a puncture by a nail or screw, or if the tire comes off the bead. Also, please be aware that this coverage doesn't apply to any damage to the sidewall.

### Customer Responsibility :

1. It is crucial to have a competent and skilled operator to handle any equipment you rent.
2. Perform Daily maintenance. (Checking fluid levels, tire pressures, and grease machines)
3. In case of any malfunction or equipment failure, please notify Ark Rentals immediately.
4. To avoid additional charges, make sure to clean and refuel the equipment before returning it.

**ALL RENTAL RATES SUBJECT TO CHANGE WITHOUT NOTICE**

**General Information**

## Ark Rentals

**Location :**

1180 Centre Turnpike Route 61 South  
Orwigsburg, PA 17961

**Contacts :**

Store: (570) 366-1071  
Toll Free : (866) 882-1429  
Fax: (570) 366-1081  
Email: [Info@arkrentals.com](mailto:Info@arkrentals.com)

**General Manager :**

Bob Shoener

**Business Hours :**

Monday through Friday 7:00 A.M. to 4:30 P.M.  
Saturday 7:00 A.M. to 4:00 P.M.  
Please inquire if any after hour delivery or service is needed.

**Service Department :**

Ark Rentals provides equipment repair and maintenance services. Diagnostic and service fees are determined on a case-by-case basis and will be established once our mechanics diagnose the issue.

**Hydraulic Hose Replacement :**

Ark Rentals has a hydraulic hose machine and a supply of common fittings to replace damaged or broken hydraulic hoses. Prices will be determined based on the requirements of the hoses and fittings.

**Delivery :**

Ark Rentals provides complete delivery service for all equipment rentals.  
Please contact the store or ask a sales associate for delivery rates.

**Be sure to Like Us on Facebook and check for our weekly specials and updates**

**Description**

**Air Compressors**

**Air Compressor** (2 HP Electric Jenny)

**Air Compressor 210 CFM**

**Air Compressor** (Electric Emglo)

**Air Compressor** (Gas Quincy)

**Air Tools & Accessories**

**Air Chipper** (4 Bolt)

**Air Hose/Wand**

**Jackhammer** (30 LB. D-Handle)

**Jackhammer** (30 LB. T-Handle)

**Jackhammer** (60 LB.)

**Jackhammer** (90 LB.)

**Jackhammer** (Rivetbuster)

**Jackhammer** (Electric)

**Air Rammer**

**Asphalt & Road**

**Rolling Magnet**

**Augers & Earth**

**Auger** (Extension X 1-3/8" Hex Bit)

**Auger** (Extension 24" X 2" Hex)

**Auger** (Skid Adaptor Round)

**Auger** (Skid Adaptor Hex)

**Post Driver** (Manual)

**Post Hole Digger with Hitch**

**Post Hole Digger** (2 Man)

**Post Hole Digger** (Hand)

**Automotive Tools**

**Battery Charger**

**Engine Hoist**

**Engine Stand**

**Polisher** (Round Car)

**Socket Set** (3/4")

**Transmission Jack**

**Blades**

**Diamond Blade** (14" All Purpose)

**Diamond Blade** (12" Asphalt)

**Diamond Blade** (18" Asphalt)

**Diamond Blade** (26" Asphalt)

**Diamond Blade** (36" Asphalt)

**Diamond Blade** (12" Concrete)

**Diamond Blade** (18" Concrete)

**Diamond Blade** (26" Concrete)

**Diamond Blade** (36" Concrete)

**Compaction Equipment**

**Rammer**

**Roller** (Double Drum)

**Roller** (Riding)

**Tamper** (Hand)

**Vibratory Plate Mat**

**Vibratory Plate**

**Concrete Tools**

**Bull Float Quick Connect**

**Concrete Broom**

**Concrete Buggy** (Track Straight)

**Concrete Buggy** (Track Swivel)

**Concrete Vibrator**

**Hand Tool** (Concrete Rake)

**Hand Tool** (Concrete)

**Jitter Bug** (Concrete)

**Mixer** (Mortar)

**Mixer** (Concrete)

**Screed** (Power Unit)

**Trowel 36"** (Concrete) (Power)

**Trowel 48"** (Concrete) (Power)

**Wheelbarrow**

**Description**
**Cutters**

**Bolt Cutter** (14")  
**Bolt Cutter** (24")  
**Brake** (Aluminum 10")  
**Ceramic Tile Cutter** (Manual)  
**Ceramic Tile Nippers**  
**Tile Nippers**

**Drills & Bits**

**Vacuum** (Various Sizes)  
**Hammer Drill Core Bits** (Various Sizes)  
**Hammer Drill Masonry Bits** (Various Sizes)  
**Hammer Drill** (Bosch)(Large)  
**Hammer Drill** (Bosch)(Small)  
**Hammer Drill** (1/2")  
**Drill** (1/2" Medium Duty)  
**Drill** (Hole Hawg)  
**Drill** (1/2" Right Angle)

**Rug & Floor Care**

**Carpet** (Power Stretcher)  
**Carpet Cleaner** (Rinse & Vac)  
**Carpet Cleaner** (Upholstery Attachment)  
**Carpet Cleaner** (Hot & Cold)  
**Carpet Cutter**  
**Carpet Dryer**  
**Carpet Floor Tool**  
**Carpet Iron**  
**Carpet Knee Kicker**  
**Floor Buffer 20"**  
**Floor Grinder** (Vacuum)  
**Floor Grinder** (1 Disk)  
**Floor Grinder** (2 Disk)  
**Floor Grinder** (Turbo 2 HP)  
**Floor Stripper**  
**Roller** (Linoleum)(77 LBS.)  
**Roller** (Linoleum)(100 LBS.)

**Earth Moving Equipment**

**Backhoe** (John Deere 310) (Large)  
**Backhoe** (Kutbota B26) (4WD)  
**Backhoe** (Kutbota L47) (4WD)  
**Conveyor** (21' Electric)  
**Excavator** (Bobcat E32i with Thumb)  
**Excavator** (Kota 35NS with Thumb)  
**Excavator** (IHI 35NX)  
**Mini Skid** (Barreto 825TKL)  
**Mini Skid** (Auger)(Attachment)  
**Mini Skid** (Bucket 4-in-1)(Attachment)  
**Mini Skid** (Bucket)(Attachment)  
**Mini Skid** (Harley Rake)(Attachment)  
**Mini Skid** (Leveler)(Attachment)  
**Mini Skid** (Tooth Bucket)(Attachment)  
**Mini Skid** (Trencher)(Attachment)  
**Skid Loader** (Case 40 XT)  
**Skid Loader** (Bobcat S570)  
**Skid Loader Track** (Kubota SUL 65-2 HWC)  
**Skid Loader Track** (Bobcat T64)  
**Skid Loader** (Auger)(Attachment)  
**Skid Loader** (Bucket With Teeth)(Attachment)  
**Skid Loader** (Forks)(Attachment)  
**Skid Loader** (Harley Rake)(Attachment)  
**Skid Loader** (Hydraulic)(Attachment)  
**Skid Loader** (Rockhound)(Attachment)  
**Skid Loader** (Trencher)(Attachment)

**Levels & Transit**

**Laser** (Not Self Leveling)  
**Wheel** (Measuring)  
**Tape** (Measuring 200' Cloth)

**Jacks**

**Jack** (6 Ton Bottle)  
**Jack** (20 Ton Bottle)  
**Jack** (Railroad)

**Description**
**Dollies**

**Dolly** (Laydown)  
**Dolly** (4 Wheel)  
**Dolly** (Appliance Laydown)  
**Dolly** (Appliance)  
**Dolly** (Small Appliance)  
**Dolly** (Stair Climber)  
**Dolly** (Upright Piano)

**Hand Truck**

**Johnson Bar**  
**Pallet Truck** (6,000 LB.)  
**Rollers** (Machinery)

**Fastening Equipment**

**Banding Set**  
**Carpet Stapler** (Electric)  
**Nailer** (Framing Air)  
**Nailer** (Hardwood Floor Air)  
**Nailer** (Hardwood Floor)  
**Nailer** (Hardwood Surface)  
**Roofing Nailer** (Coil)  
**Powder Actuated Gun**  
**Stapler** (Underlayment)  
**Stapler** (Roofing Slap)  
**Stapler** (Air)

**Trailers & Hitches**

**Dump Trailer**  
**Tow Dolly**  
**Wooden Ramps 8'** (Set)  
**Tow Dolly** (2,500 LB. Winch)  
**Tow Dolly Tire Straps** (Pair)  
**Trailer** (11,925 LB. Surge Brake)  
**Trailer** (15,000 LB. Electric Brake)  
**Trailer** (2,900 LB.) (GVW) (Stow)  
**Trailer** (9,850 LB. Electric Brake) (Tilt)  
**Enclosed Trailer** (6' X 12')  
**Trailer** (Roofers)

**Generators**

**Generator** (15,000 Watt)  
**Generator** (13,000 Watt)  
**Generator** (7,000 Watt)  
**Generator** (6,000 Watt)  
**Generator** (4,500 Watt)  
**Generator** (3,600 Watt)  
**Generator** (2,500 Watt)

**Heaters & Fans**

**Fan** (High Velocity)  
**Fan** (Manhole)  
**Heater** (Gun)  
**Heater** (Val-4 Small)  
**Heater** (Val-6 Large)  
**Heater** (Electric)  
**Heater** (Kerosene)(70,000 BTU)  
**Heater** (Kerosene)(150,000 BTU)  
**Heater** (Kerosene)(165,000 BTU)  
**Heater** (Kerosene)(350,000 BTU)  
**Heater** (Propane)(75,000 - 125,000 BTU)  
**Heater** (Propane)(150,000 BTU)  
**Heater** (Propane)(275,000 BTU)  
**Heater** (Propane)(350,000 BTU)  
**Heater** (Propane)(600,000 BTU)  
**Heater** (Thermostat LB White)

**Fuel & Oil**

**Fuel Can** (Regular Gas)  
**Fuel Can** (Diesel)  
**Propane** (20 LB. Bottle)  
**Propane** (33 LB. Bottle)  
**Propane** (100 LB. Bottle)  
**Propane** (Hose Adapters)

**Electrical Accessories**

**Conduit Bender**  
**Electric Fish** (120')

## Description

### Ladders & Accessories

- Ladder (6' step)
- Ladder (10' step)
- Ladder (12' step)
- Ladder (24' Extension)
- Ladder (28' Extension)
- Ladder (32' Extension)
- Ladder (40' Extension)
- Stage (Aluminum)(20" X 12')
- Stage (Aluminum)(14" X 24')
- Stage (Aluminum)(20" X 20')
- Stage (Aluminum)(20" X 20')

### Lifts

- Scissor 19' (Indoor)
- Scissor 26' (Indoor)
- Scissor 26' (Outdoor)
- Scissor 33' (All Terrain)
- Towable 34'
- Towable 50'
- Electric 40' (Articulated)
- Boom Lift 45' (4WD Articulated)
- Boom Lift 60' (4WD Articulated)
- Boom Lift 85' (4WD Articulated)

### Lighting

- Light Stand (Two 500 Watt)
- Light Towers (Four Blub 1,000 Watt)

### Paint & Wallpaper

- Paint Sprayer (Airless)
- Sprayer (Texture Gun)
- Wallpaper Steamer

### Welders

- Welder (150 AMP)
- Welder (225 AMP) (Towable)
- Welder (Gasless Mig)
- Welder (Hood)

### Material Handling

- Drywall Lift (11')
- Drywall Lift (Extension 48")
- Forklift (5,000 LB.)
- Forklift (Extensions Set)
- Genie 16' (Duct Lift)
- Genie 24' (Duct Lift)
- Loadhandler (Telescoping Forklift)
- Shingle Lift (16' Section)
- Shingle Lift (8' Section)
- Shingle Lift (4' Section)
- Shingle Tear Off Shovel
- Shingle Lift

### Pressure Washers

- Pressure Washer (Hot & Cold)
- Pressure Washer (1,500 PSI)
- Pressure Washer (2,400 PSI)
- Pressure Washer (2,700 PSI)
- Pressure Washer (3,000 PSI)
- Pressure Washer (Sidewalk Cleaner)
- Pressure Washer (Turbo Tip)
- Pressure Washer (Sandblast Attachment)

### Pumps

- Pump 2" (Centrifugal)
- Pump 2" (Submersible)
- Pump 3/4" (Submersible)
- Pump 2" (Trash)
- Pump 3" (Trash)
- Pump 4" (Trash)
- Pump 3" (Diaphragm)
- Pump (Fuel Transfer)

### Vacuums

- Vacuum (Dry Only)
- Vacuum (Wet & Dry)
- Vacuum (Shop)(18 Gallon)

**Description**

**Lawn & Garden**

**Lawn & Garden**

- Aerator** (Motorized)
- Aerator** (Spike Tow)
- Aerator** (Towable Coring)
- Bale** (Chopper)
- Bale** (Chopper with Trailer)
- Blower** (Leaf Backpack)
- Chipper 5"** (Vermeer)
- Chipper 7"** (Bandit)
- Chipper 12"** (Bandit)
- Dethatcher**
- Edger** (Landscape)
- Hand Tool** (Garden)
- Hand Tool** (Snow Rake)
- Hedge Trimmer 19"** (Electric)
- Hedge Trimmer 30"** (Electric)
- Hydroseeder**
- Leaf Vac**
- Log Splitter** (Upright)(Gas)
- Loppers**
- Leaf Chipper Vacuum**
- Mower** (High Weed)
- Pole Pruner** (Husky)
- Power Broom**
- Roller** (Small Lawn)(Pull)
- Roller** (Medium Lawn)(Push or Tow)
- Roller** (Large Lawn)(Tow)
- Rototiller** (Large 13 HP)
- Rototiller** (Midsize 5.5 HP)
- Sod Cutter**
- Spreader** (Limer Drop Push)
- Spreader** (Small Round Push)
- Spreader** (Small Round Tow)
- Spreader** (Broadcast Large Push)
- Spreader** (Broadcast Medium)
- Spreader** (Broadcast Small Push)

- Stump Grinder** (Large)(Barreto)
- Stump Grinder** (Medium)
- Stump Grinder** (Small)
- Tree Branch Trimmer**
- Trencher** (6" X 24")
- Trencher** (Dog Fence)
- Weed Wacker**
- Weed Wacker** (Grass Cutting Blade)
- Weed Wacker** (Saw Blade)
- York Rake** (3 Point Hitch)
- York Rake** (4 FT Towable)

**Metal Detector**

- Metal Detector**

**Saws**

- Router**
- Saw 14"** (Cut-Off)
- Saw Brick14"** (Wet) (Gas)
- Saw 10"** (Miter)
- Saw 10"** (Tub Saw)
- Saw 14"** (Air Saw)
- Saw 16"** (Wood Chainsaw)
- Saw 18"** (Wood Chainsaw)
- Saw 20"** (Wood Chainsaw)
- Saw 14"** (Concrete Push)
- Saw 18"** (Concrete)(Self)
- Saw 36"** (Concrete) (Self)
- Saw** (4-1/2") (Wet Tile)
- Saw 18"** (Propane)(Self)
- Saw** (Band)
- Saw** (Circular)
- Saw 12"**(Concrete Chainsaw)
- Saw 16"**(Concrete Chainsaw)
- Saw** (Jig)
- Saw** (Reciprocating) (Sawzall)
- Saw 14"** (Cut-Off) (Electric)



**Description**
**Plumbing Equipment**

 Hub Puller *(Cast Iron)*

Pipe Burr Tool

Pipe Cutter 1"

Pipe Cutter 2"

Pipe Cutter 4"

 Pipe Cutter *(5/8" X 2-1/8")*

 Pipe Cutter 4" *(Plastic)*

 Pipe Threader *(3/4" or 1/2")*

 Pipe Threader *(1" or 2")*

Pipe Wrench 18"

Pipe Wrench 24"

Pipe Wrench 36"

Pipe Wrench 48"

 Sewer Snake *(Sectional)*

 Sewer Snake *(1.5)(Small 50')*

 Sewer Snake *(ERE 100')*

Valve Key

**Sanders**

 Drywall Sander *(Attachment)*

 Drywall Sander *(Shop Vac)*

 Floor Sander *(4 Disc)*

 Floor Sander *(Drum)*

 Floor Sander *(Edger)*

Palm Sander

**Roofing Equipment**

 Lift Protection *(Malta X1250 Mobile Grabber)*

Roofers Trailer

 Shingle Eater *(Air)*

Dump Trailer

Shingle Lift

**Hydraulic Power**

 Hydraulic Power Pack *(CH 1355)*

 Hydraulic Jackhammer *(HB 45)*

 Hydraulic Jackhammer *(HB 57)*
**Scaffolding**

 Scaffolding 8" *(Wheels/Casters)*

 Scaffolding 19" *(Planks)*

 Scaffolding *(28" X 5')(Buck)*

 Scaffolding *(3' X 5')(Short Buck)*

 Scaffolding *(5' X 5')(Buck)*

 Scaffolding Jack 24" *(Swivel)*

Scaffolding Jack 24"

 Scaffolding *(Leg Exetensions)*

 Scaffolding *(Outrigger)*

 Scaffolding *(Painters 3' End Plan)*

 Scaffolding *(Painters 6' End Plan)*

 Scaffolding *(Painters)*

 Scaffolding *(Painters Plywood)*

 Scaffolding *(Painters Safety)*

 Scaffolding *(Painters Siderail)*

 Scaffolding *(Painters Wheels)*

 Scaffolding *(Pin)*

 Scaffolding *(Racking Bar)*

 Scaffolding *(Safety Rail)(Long)*

 Scaffolding *(Safety Rail)(Post)*

 Scaffolding *(Safety Rail)(Short)*

 Scaffolding *(Safety Sides)(Half)*

 Scaffolding *(Safety Sides)(Long)*

 Scaffolding *(Side Extension Bracket)*

 Scaffolding *(Swivel Base Plate)*

 Scaffolding *(Tower Base)*

 Scaffolding *(Tower Long)*

 Scaffolding *(Tower Toe Board)*

 Scaffolding *(X Brace)*
**Hoists**

 Come-A-Long *(1 Ton)*

 Glass Suction Cups *(Pair)*
**Hand Grinders**

 Diamond Cup *(7")*

 Grinder *(7")(Saw Tech)*

**Event and Party Items**

**Our Party Items :**

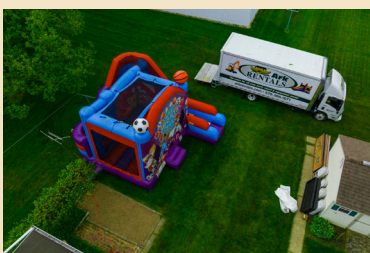
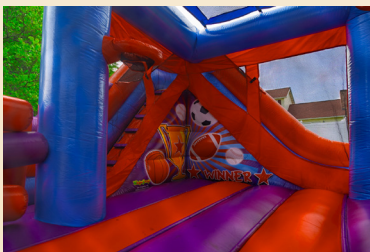
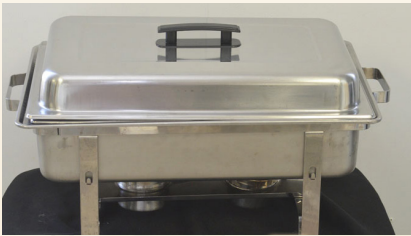
Weddings

Birthday Parties

Special Events

Bounce Houses

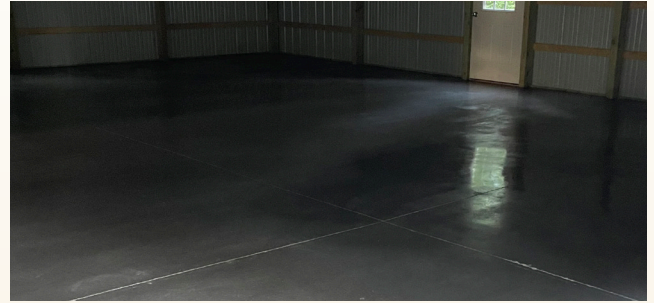
Tents & Canopies



**Concrete**

**Our Concrete Work :**

- Floors
- Decks
- Patios



**Contact David**

**Call: (561) 628-0717**

**Email: [dgiammaresi@ppb1.com](mailto:dgiammaresi@ppb1.com)**



# Building Materials & Supplies

**What We Offer**  
Roofing  
Lumber  
Trusses  
Hardware  
Surplus Deals

**Store:** (570) 739-4606

**Fax:** (570) 300-1622

**Email:** [bhess@alpinebuildingsupply.com](mailto:bhess@alpinebuildingsupply.com)

**696 South Route 183 Schulkill Haven, PA 17972**

**[www.AlpineBuildingSupply.com](http://www.AlpineBuildingSupply.com)**